

**THE CORPORATION OF THE TOWN OF AMHERSTBURG
BY-LAW NO. 2022-084**

**By-law to dedicate certain lands in the
Town of Amherstburg as a Public Highway
(southerly extension of Kingsbridge Drive)**

WHEREAS the Municipal Act, R.S.O. 2001, c.25 Sections 24-68 authorizes the Council of every municipality to pass a by-law for establishing, laying out, acquiring, assuming, or naming a highway;

AND WHEREAS land has been transferred to the Town to be dedicated as a public highway for the extension of Kingsbridge Drive and it is now appropriate to dedicate Lot 44, Plan 12M-373 as follows:

12M-373, Lot 44

751.86 square metres

NOW THEREFORE the Council of the Corporation of the Town of Amherstburg enacts as follows:

1. THAT the lands described as Lot 44, 12M-373 with a size of area of 751.86 square metres in the Town of Amherstburg, County of Essex, Province of Ontario is hereby dedicated as a public highway, and forms part of Kingsbridge Drive.
2. THAT this By-law shall come into force and take effect immediately upon the final passing thereof at which time all by-laws that are inconsistent with the provisions of this by-law and the same are hereby amended insofar as it is necessary to give effect to the provisions of this by-law.

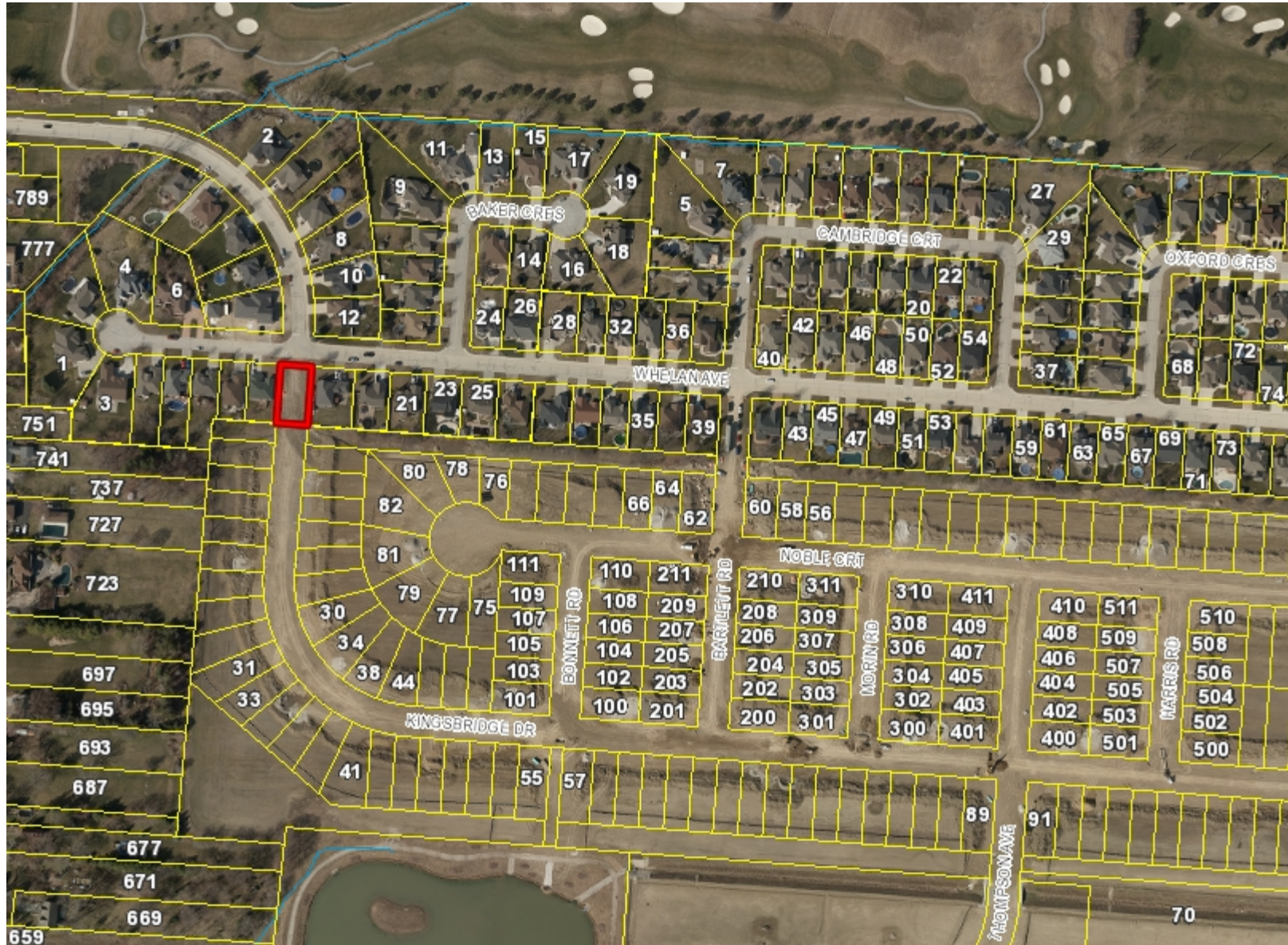
Read a first, second and third time and finally passed this 15th day of August, 2022.

MAYOR – ALDO DICARLO

CLERK – VALERIE CRITCHLEY



Town of Amherstburg



Legend

- Roads
- Parcels
- Streams and Creeks
- Essex

0.2 0 Distance / 0.2 Kilometers

Notes

This is where you enter your notes about the map.

