

ATTACHMENT 1 - Proposed Intervention
HERITAGE COMMITTEE PRESENTATION
REVISED STAIRWELL & ELEVATOR FINISHES OPTIONS
247 BROCK STREET, AMHERSTBURG



THE LOFTS

AT ST. ANTHONY • CIRCA 1911

Building Owner:
Terry Jones Realty Inc.

 **ROSATI**
DEVELOP • DESIGN • CONSTRUCT

 **LASSALINE**
PLANNING CONSULTANTS INC.

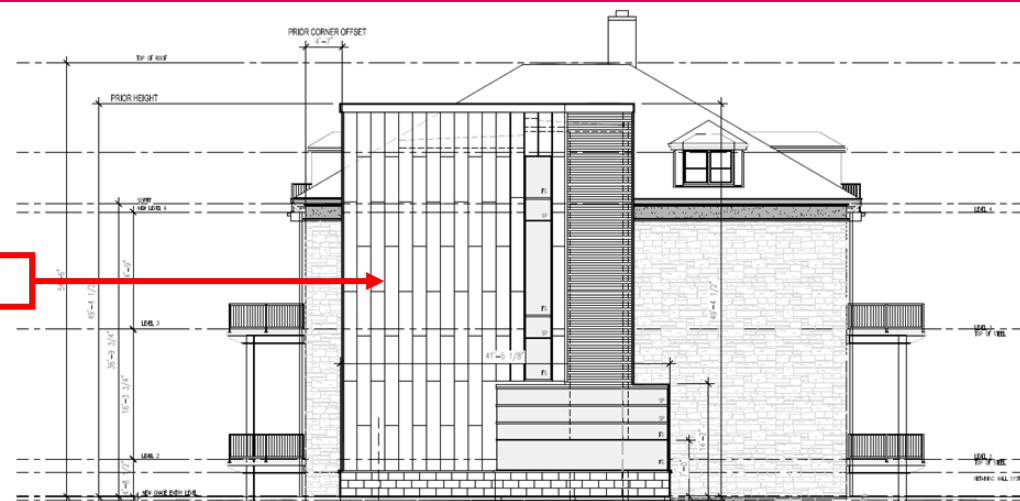
South-West View



**The following slides will
demonstrate new Finishes
Options for the Stairwell &
Elevator Addition**

East Elevation Elevator and Stairwell Revisions

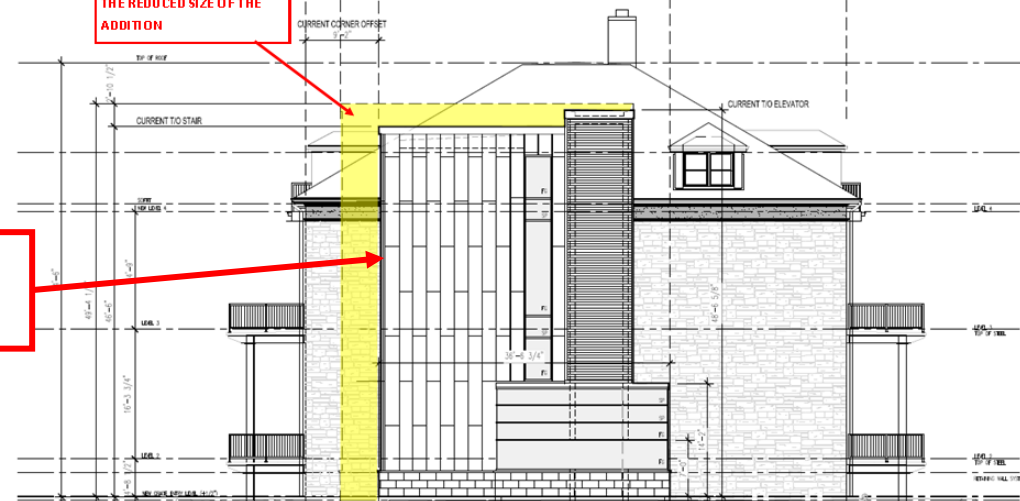
ATTACHMENT 1 - Proposed Intervention



ORIGINAL EAST ELEVATION

EAST ELEVATION - Previous Submission - Addition Elevation Size

SHADED AREA REPRESENTS
THE REDUCED SIZE OF THE
ADDITION



**REDUCED ELEVATOR & STAIRWELL
DESIGN - 16% REDUCTION IN
SIZE**

EAST ELEVATION -Current - Addition Elevation Size Reduced (-16%)

East Elevation

OPTION 1

**Dormer Colour to match
Roofing materials**

**2 - Architectural
Metal Siding**

**Window Units with
Charcoal Grey Tint**

**3 - Standing Seam
Vertical Panel Metal
Siding**

**1 - Smooth Face Architectural Stone
(Arriscraft Renaissance)
Colour to be selected in consultation
with Heritage Planner**



East Elevation

OPTION 2

**Dormer Colour to match
Roofing materials**

**2 - Architectural
Metal Siding**

**Window Units with
Charcoal Grey Tint**

**1 - Smooth Face Architectural Stone
(Arriscraft Renaissance) Colour to be
selected in consultation with Heritage
Planner**



East Elevation

OPTION 3

**Dormer Colour to match
Roofing materials**

**2 - Architectural
Metal Siding**

**Window Units with
Charcoal Grey Tint**

**4 - Smooth Face Stone (Permacon
- Aria-Stone Heron mix) Colour to
be selected in consultation with
Heritage Planner**

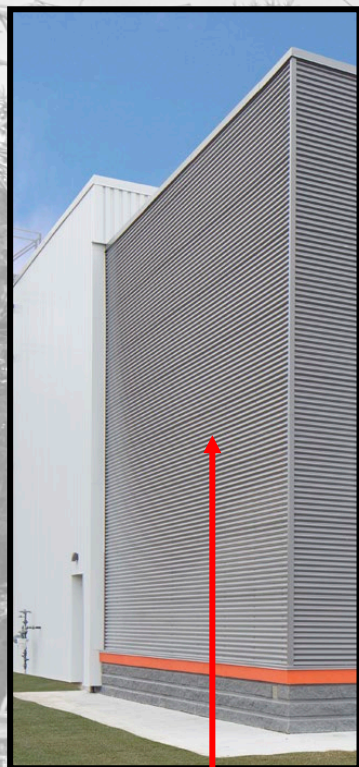


Sample Materials



**1 - Smooth Face
Architectural Stone at Base
of Elevator Entry Area**

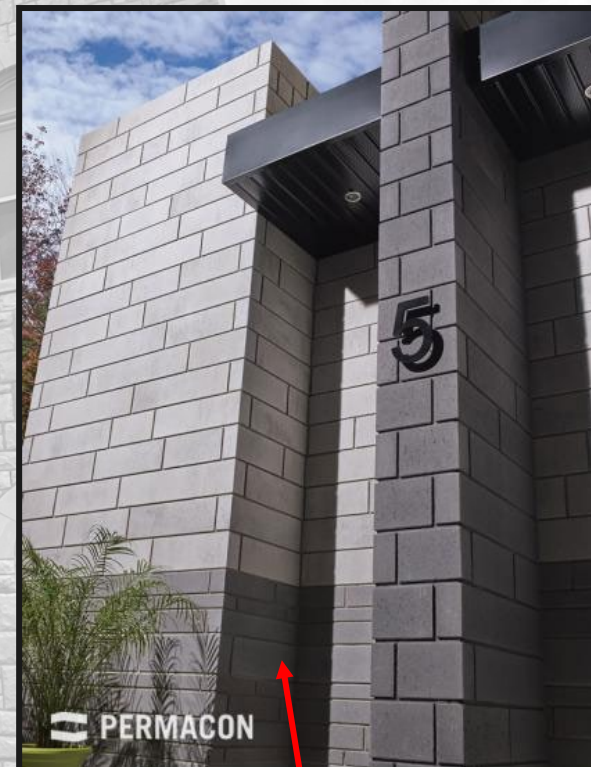
Sample Materials



2 - Architectural Metal Siding at Elevator Shaft



3 - Vertical Metal Siding at New Stairwell



**4 - Smooth Face Stone
(Permacon - Aria-Stone Heron mix)**

**THE
LOFTS**
AT ST. ANTHONY • CIRCA 1911

ATTACHMENT 1 - Proposed Intervention

247 Brock Street



Thank you.