

COUNCIL PRESENTATION
REVISED STAIRWELL & ELEVATOR FINISHES OPTIONS
247 BROCK STREET, AMHERSTBURG



THE LOFTS

AT ST. ANTHONY • CIRCA 1911

Building Owner:
Terry Jones Realty Inc.

ROSATI
DEVELOP • DESIGN • CONSTRUCT

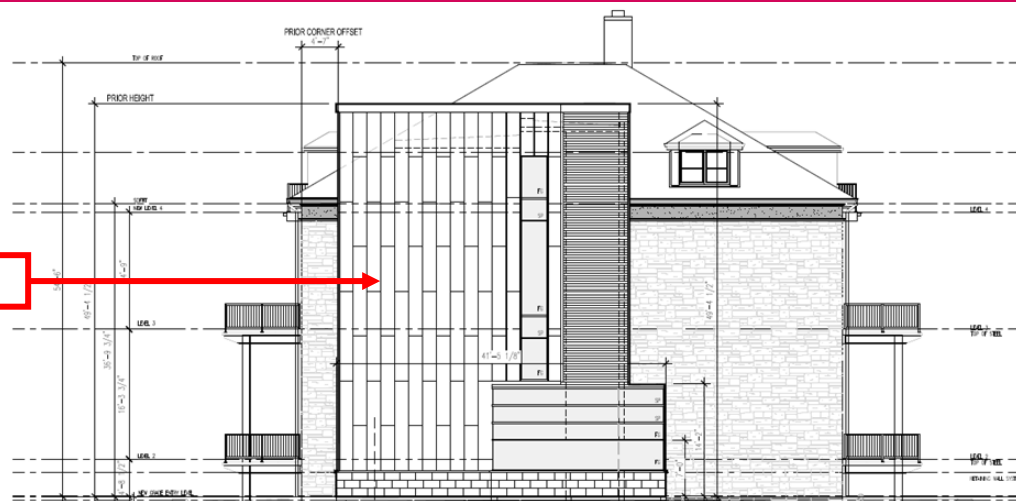
LASSALINE
PLANNING CONSULTANTS INC.



**The following slides will
demonstrate new Finishes
Options for the Stairwell &
Elevator Addition**

East Elevation Elevator and Stairwell Revisions

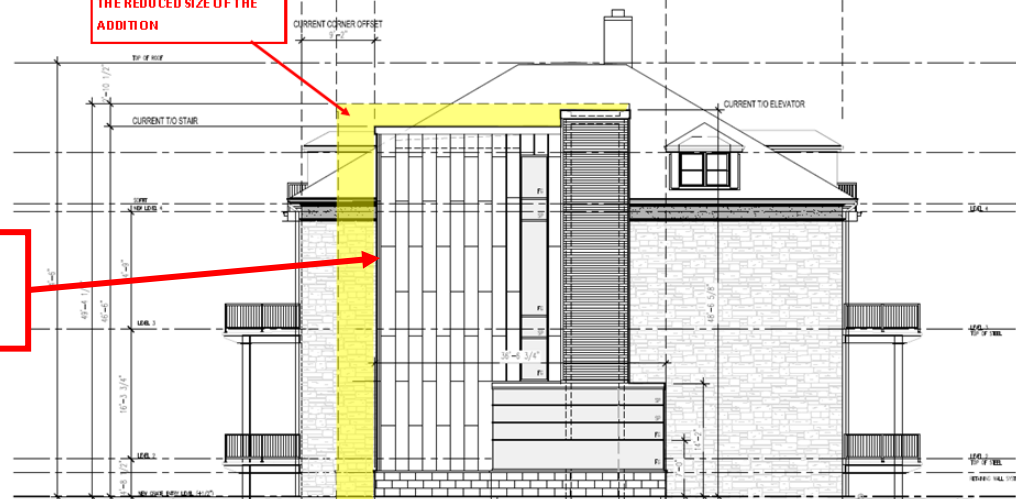
ORIGINAL EAST ELEVATION



EAST ELEVATION - Previous Submission - Addition Elevation Size

SHADED AREA REPRESENTS
THE REDUCED SIZE OF THE
ADDITION

**REDUCED ELEVATOR & STAIRWELL
DESIGN – 16% REDUCTION IN
SIZE**



EAST ELEVATION -Current - Addition Elevation Size Reduced (-16%)

OPTION 1

**Dormer Colour to match
Roofing materials**

**2 - Architectural
Metal Siding**

**Window Units with
Charcoal Grey Tint**

**3 - Standing Seam
Vertical Panel Metal
Siding**

**1 - Smooth Face Architectural Stone
(Arriscraft Renaissance)
Colour to be selected in consultation
with Heritage Planner**



OPTION 2

**Dormer Colour to match
Roofing materials**

**2 - Architectural
Metal Siding**

**Window Units with
Charcoal Grey Tint**

**1 - Smooth Face Architectural Stone
(Arriscraft Renaissance) Colour to be
selected in consultation with Heritage
Planner**



OPTION 3

**Dormer Colour to match
Roofing materials**

**2 - Architectural
Metal Siding**

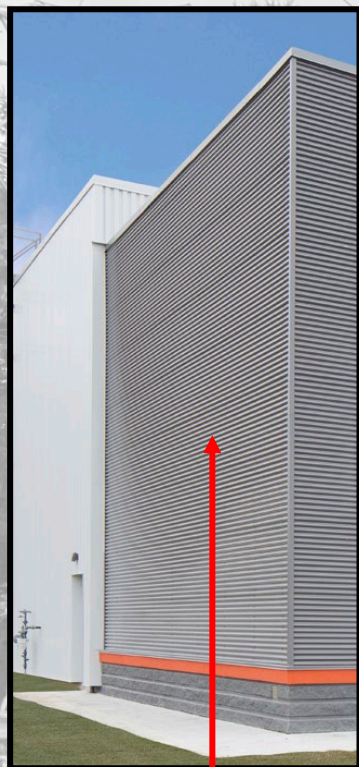
**Window Units with
Charcoal Grey Tint**

**4 - Smooth Face Stone (Permacon
- Aria-Stone Heron mix) Colour to
be selected in consultation with
Heritage Planner**





**1 - Smooth Face
Architectural Stone at Base
of Elevator Entry Area**



2 - Architectural Metal Siding at Elevator Shaft



3 - Vertical Metal Siding at New Stairwell



**4 - Smooth Face Stone
(Permacon - Aria-Stone Heron mix)**

**THE
LOFTS**
AT ST. ANTHONY • CIRCA 1911

247 Brock Street



Thank you.