



# The Future is **Green**

## Phase 1 Climate Action Plan

Dr. Lisa A. Porter (THRIVE Director, Professor University of Windsor)

Richard Peddie (THRIVE Director)

Karen Alexander (President, Essex County Field Naturalists Club)

Dr Cameron Proctor (Asst. Professor, University of Windsor)

Jasminka Kalajdzic (THRIVE Director, Assoc. Professor University of Windsor)

Kory Renaud (THRIVE Director)

Linden Crain (Youth Leader)



Local News

## Record-breaking lake levels raise overland flooding fears across Essex County

# CLIMATE REALITY

### *Climate Change Is Bankrupting America's Small Towns*

Repeated shocks from hurricanes, fires and floods are pushing some rural communities, already struggling economically, to the brink of financial collapse.

- 85% of the world's population have felt the impact of climate change
- Essex county is not immune



# CLIMATE CHANGE IMPACTS HEALTH & WELLNESS

## New report shows which cancers are above average rate in Windsor-Essex

CTV Windsor

Published Wednesday, May 18, 2016 3:05PM EDT





# AMHERSTBURG RESPONSE TO DATE



Local News

## Essex County joins in declaration of climate change emergency

Lindsay Charlton

Nov 21, 2019 • November 21, 2019 • 2 minute read • [Join the conversation](#)

### Amherstburg Council Unanimously Declares Climate Emergency

November 02, 2019



Page 1 of 3

The Corporation of The  
Town of Amherstburg

November 25, 2019

VIA EMAIL

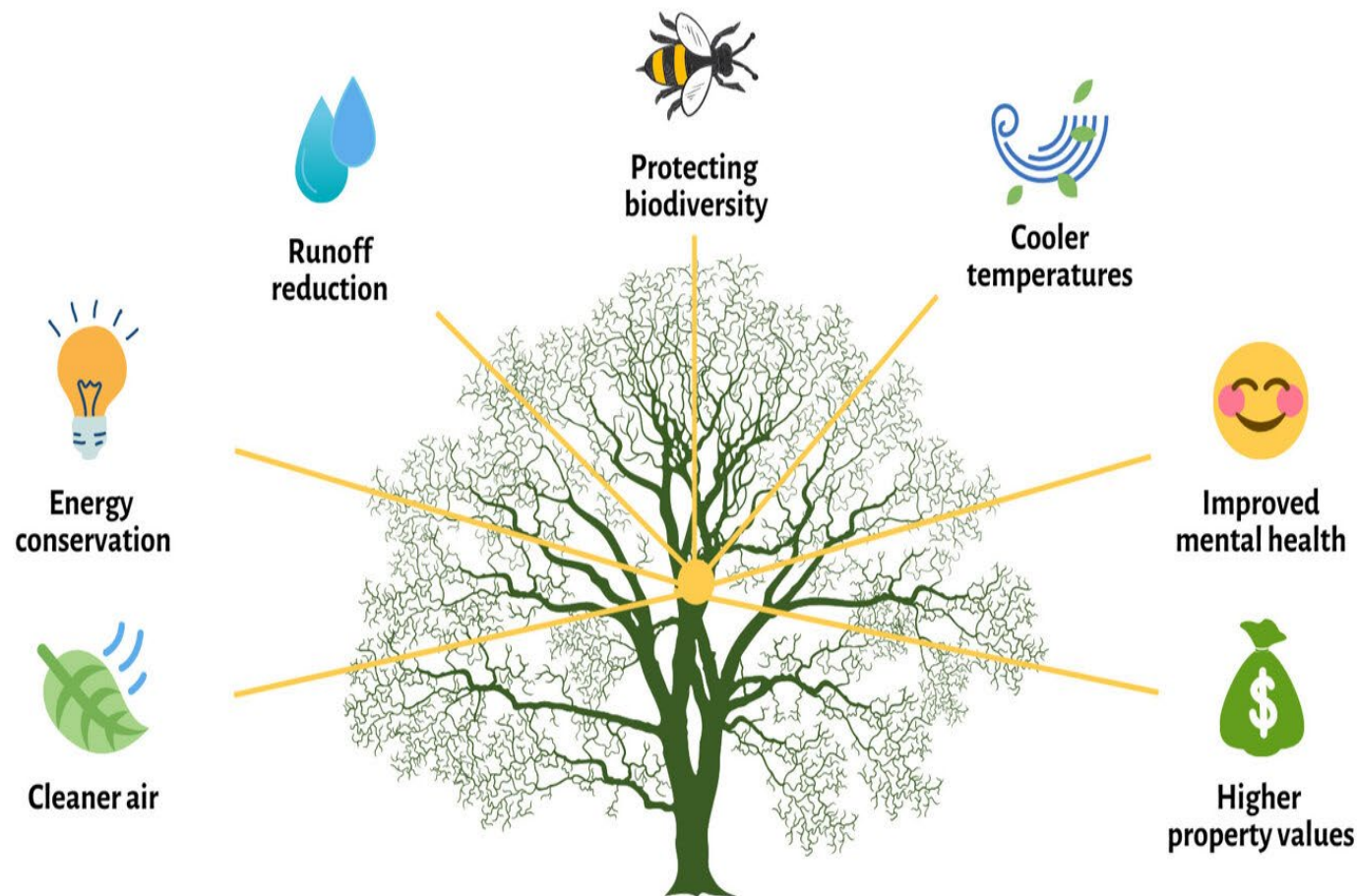
Honourable Jeff Yurek  
Minister of the Environment, Conservation and Parks  
College Park 5th Floor  
777 Bay St.  
Toronto, ON  
M7A 2J3

Re: Declaration of Climate Emergency in the Town of Amherstburg

Declarations are not enough – it is **time to take action!**



# BEST CARBON CAPTURE IS A TREE



- Planting trees is an easy way to make progress on climate action
- Trees deliver numerous benefits



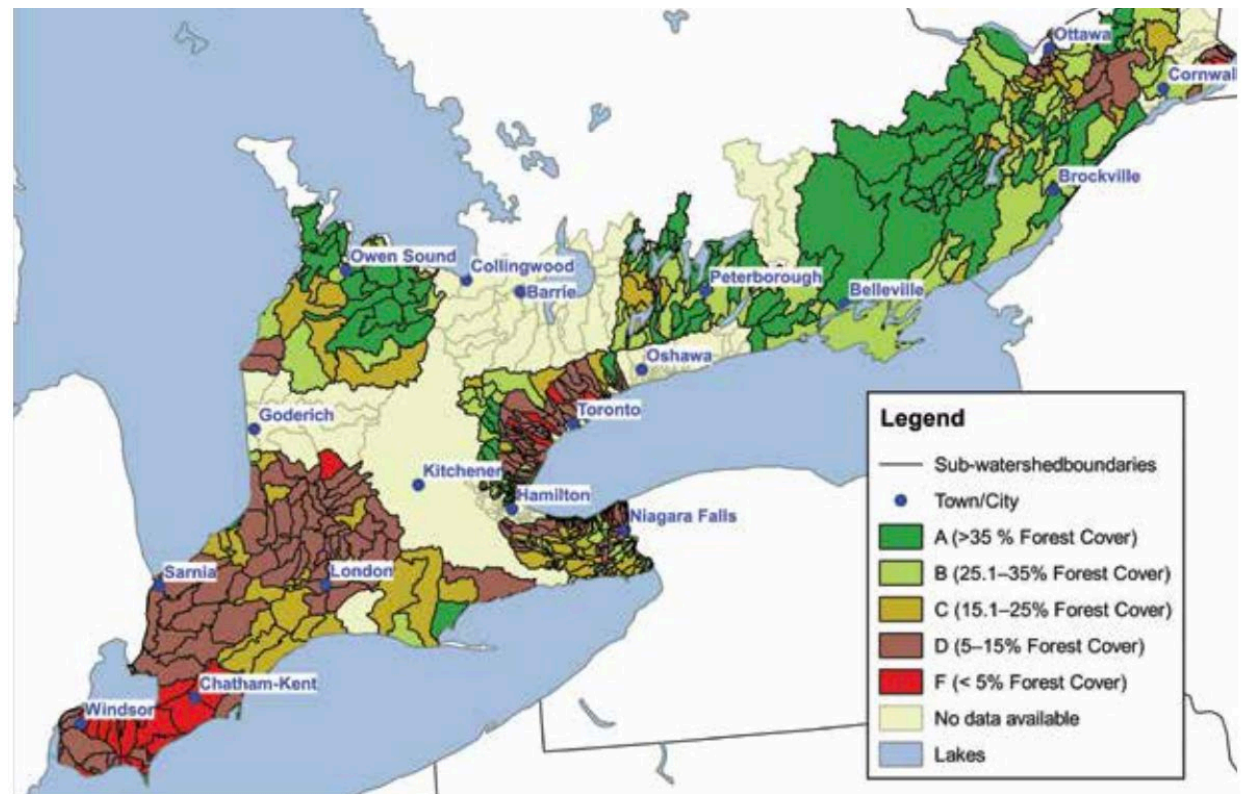


# ESSEX COUNTY HAS LOWEST NATURAL COVER IN SWO

470,000 trees and counting!

📅 April 19, 2021

**By partnering with ReForest London and the Million Tree Challenge, organizations help create a better community for everyone**



Percent forest cover in the watersheds of southern Ontario, 2018. Colour-coded by percent forest cover grade.

Source: Conservation Ontario data compiled and mapped by the ECO.



## RECOMMENDED PLAN

- Launch a phased in Climate Campaign to champion climate action in Amherstburg
- Conduct a limited test in 2022 for potential rollout in 2023
- Program Components:
  - 200 trees
  - embed education & training
  - involve youth
  - assist seniors
  - monitoring & measurement
- Cost **\$18,200** (require **\$6000 funding now** to reserve trees)



**WE CAN'T WAIT FOR OTHERS TO CARE ABOUT  
AMHERSTBURG!**

*“ the greatest threat to our planet is the belief that  
someone else will save it”*

Robert Swan