

**Red Line**

**32.94m / 108 ft**

**Blue Line**

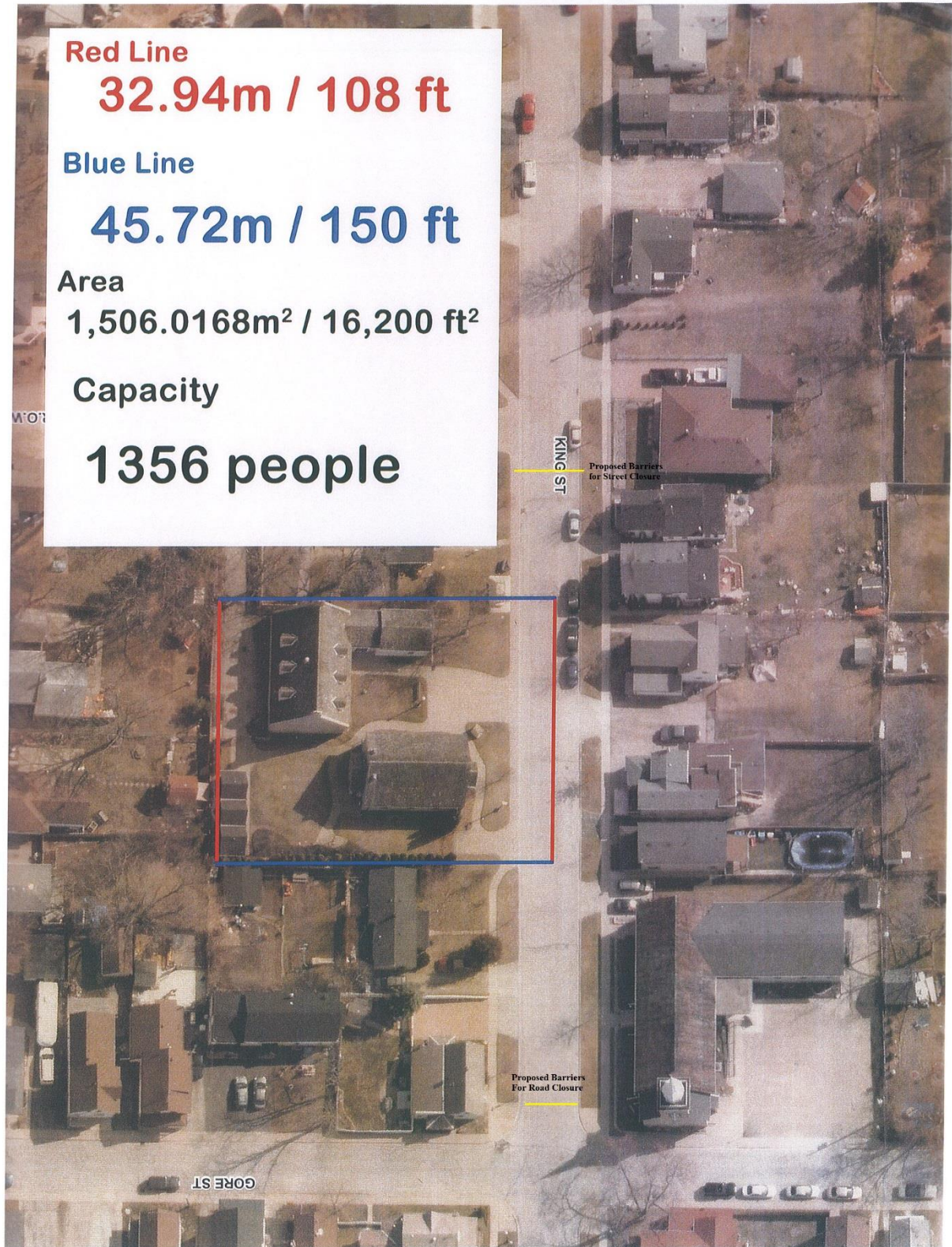
**45.72m / 150 ft**

**Area**

**1,506.0168m<sup>2</sup> / 16,200 ft<sup>2</sup>**

**Capacity**

**1356 people**





### Ribs & Ragtime Evening Program

4:00pm: Guest Arrival

4:30pm: Welcome are Speeches

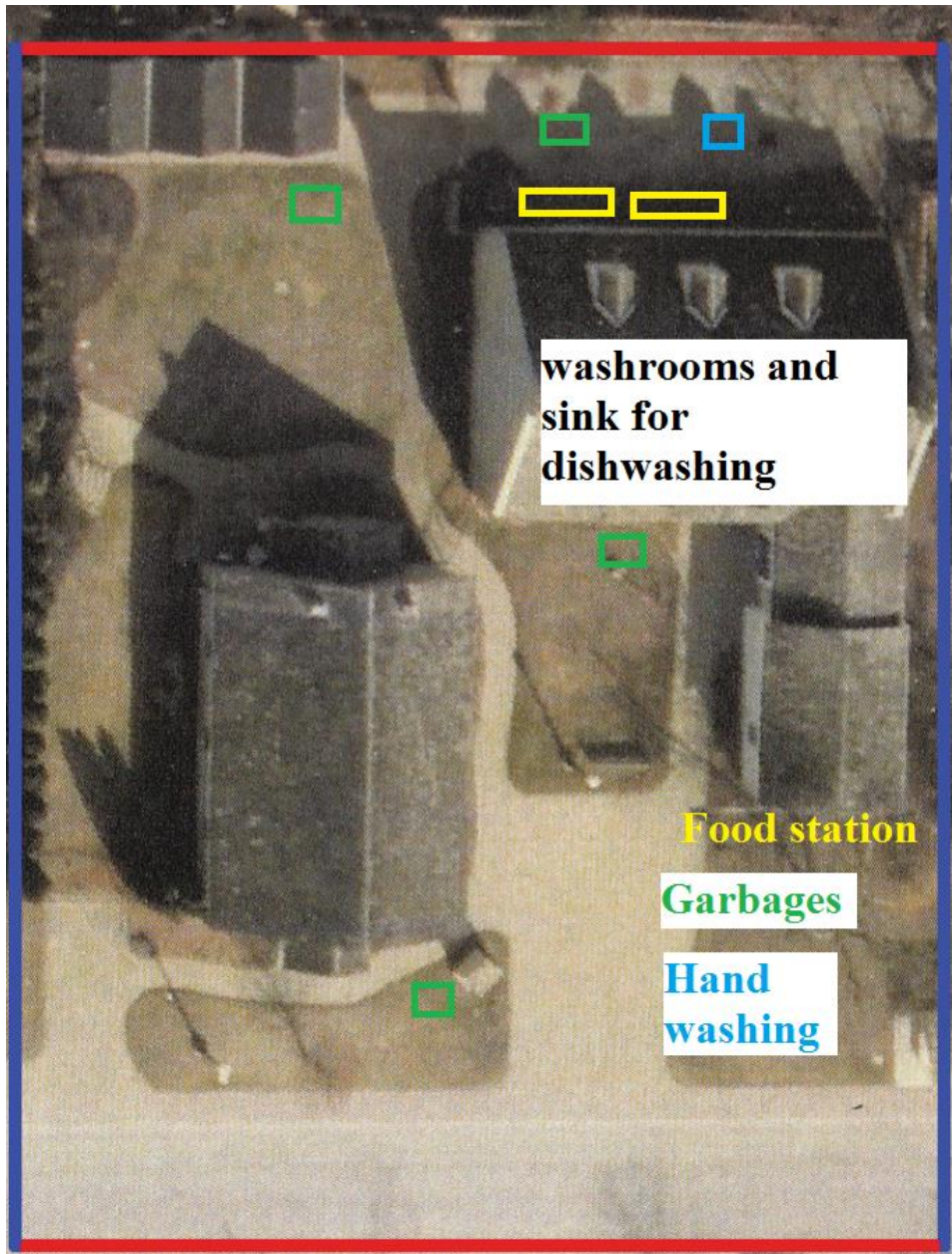
4:45-6:15pm: Entertainment (to be determined)-1<sup>st</sup> Set

6:15pm: Announce Break

7:00pm: Draw 50/50

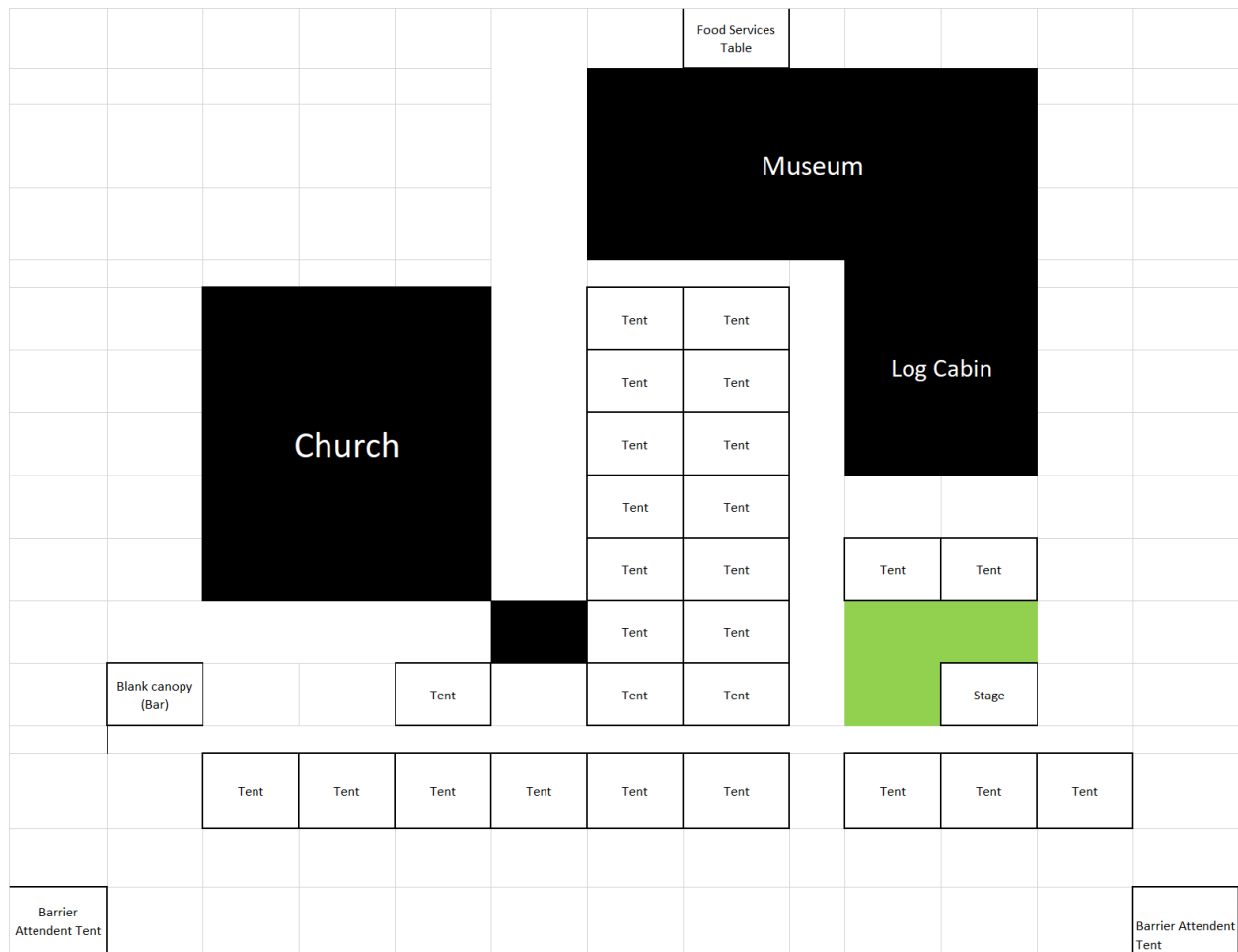
7:05pm-8:00pm: Entertainment (to be determined) Second Set

8:00pm-10:00pm Clean up and take down



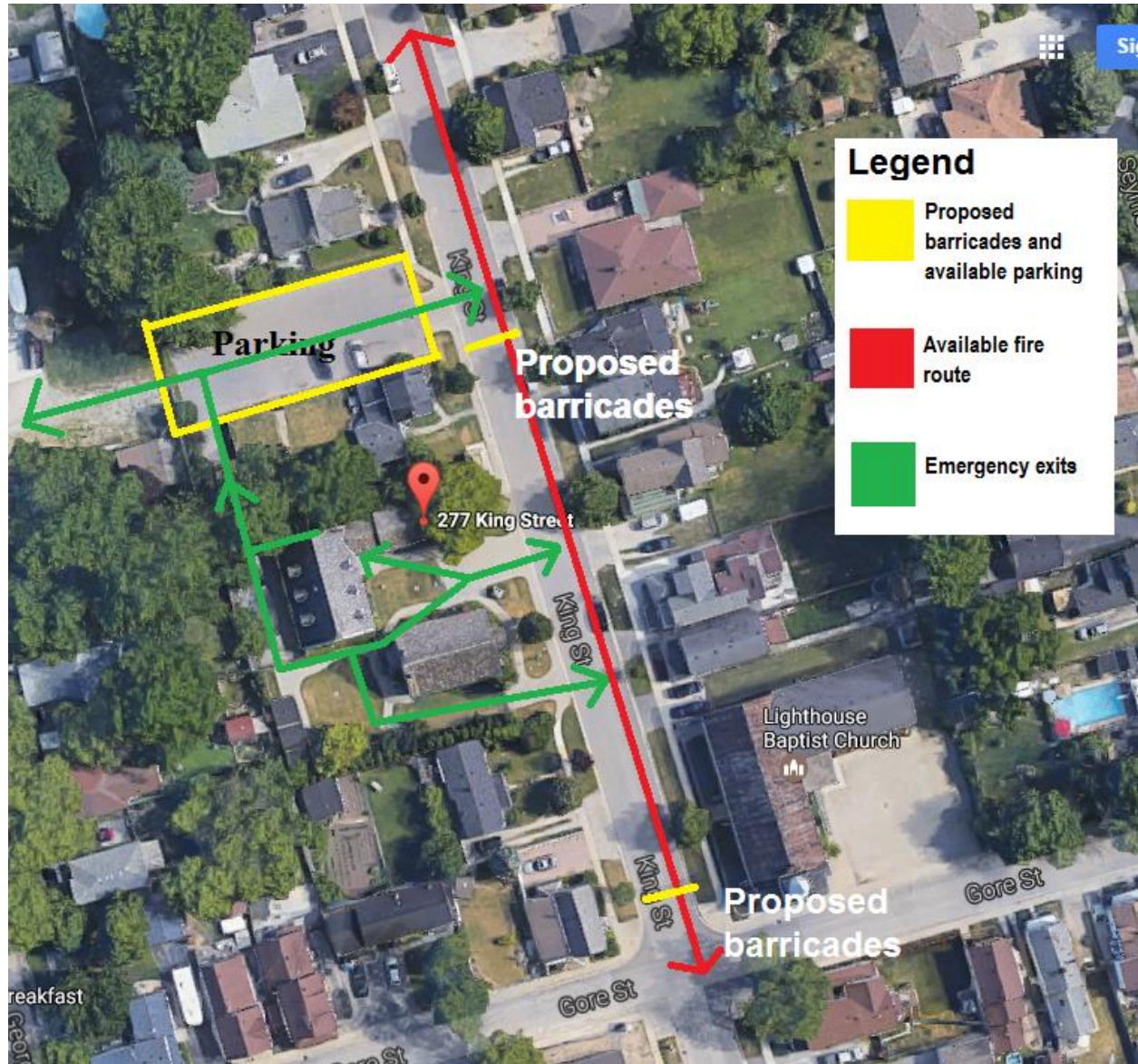
## Proposed Site Plan – Canopies

- The tents that we will be using are [standard 10 x 10 ft canopies](#)
- The tents will be placed 6 ft from any building
- Patrons will be sitting at tables places underneath the canopies – 8 people seated at each table
- 31 canopies will be used, 26 canopies for guests, 1 for food service, 1 for the bar, 1 for the stage, and 2 for manning the barriers





## Proposed Site Plan – Includes Parking, and Emergency routes



### Ribbs & Ragtime Parking Plan

- Parking will be available to guests in the museum's parking lot which is located on King Street, and dedicated volunteers will assist patrons with parking, and inform guests once the lot is full
- There will be four designated parking spots in the lot for designated disabled parking spaces.
- We propose to have *two street barriers* along King Street, the first one will be located just past the parking lot entrance, allowing patrons to park in the museum's parking lot while blocking off the section of the street in front of the museum
- The second barrier will be located near the cross section of Gore and King Street. Each of the barriers will be supervised by two volunteers at each station, and will be available and able to move the barriers if the road is to be accessed by emergency vehicles



- The proposed event will partly be utilizing some of King Street and properly enclosed, but enough clearance will be provided for emergency vehicles to move through the street
- Notices will be sent out a week prior to neighbouring properties, and event parking information will be included on our event advertisements online
- When the designated parking lot is full, guests may park on adjacent streets as space allows

## Proposed Site Plan – Fire Route

